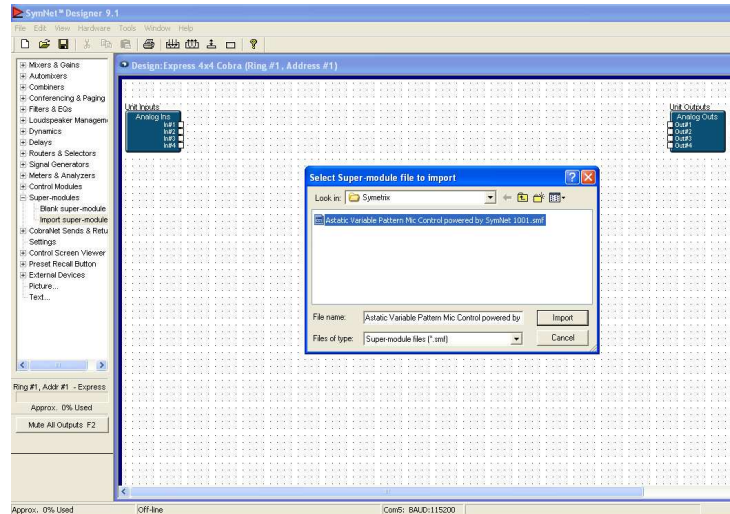
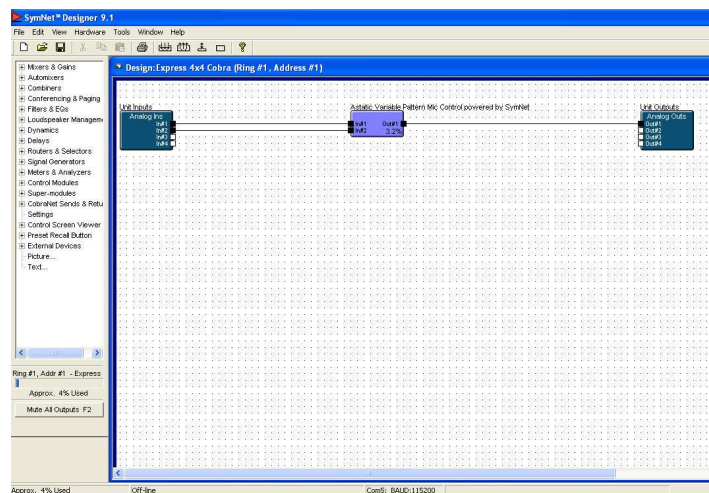


Variable Pattern Control Symetrix SymNet™

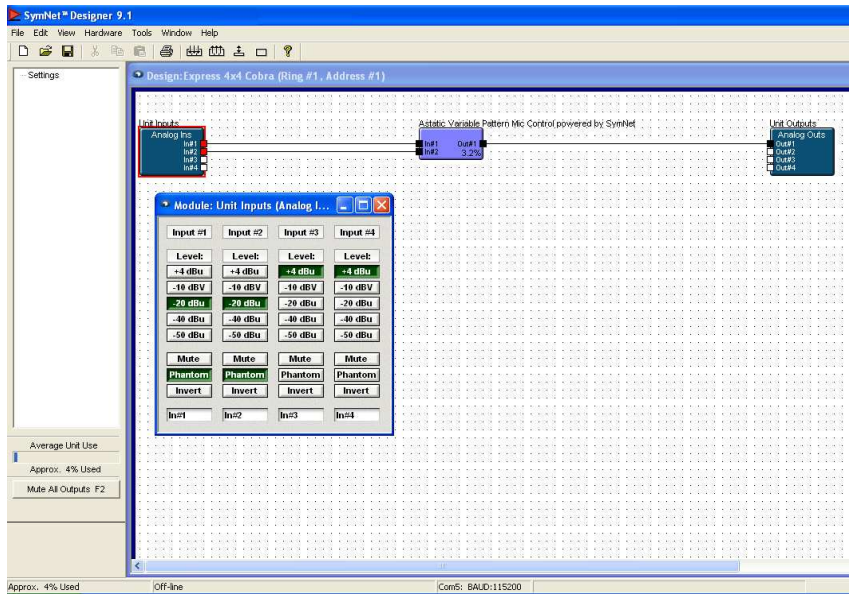
- 1.) Download the Variable Pattern Super-Module to your computer
- 2.) Open the SymNet™ Software and choose your hardware unit from the tool kit on the left. Double-click your hardware. Expand the “Super-module” from the Toolkit and double-click “Input Super-module”



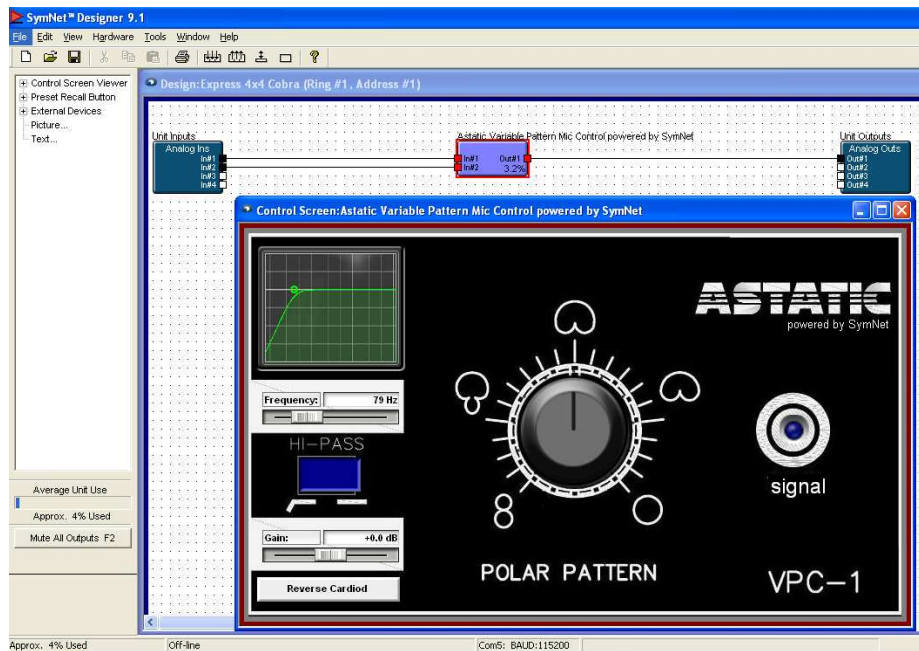
- 3.) Find the Astatic_Variable_Pattern_Mic_control_powered_by_Symnet_1001.smf and choose import.
- 4.) Set the Super-module into the signal path and connect the lines to the corresponding inputs and output.



- 5.) Set your phantom power and input gain (start with -20dBu) inside the input block
 (NOTE: When adjusting the gain for the microphone be sure to adjust both gains equally)



- 6.) The polar pattern can be adjusted by double-clicking on the Variable Pattern Mic Control Block. The hi-pass filter can also be set using this box.



Using Multiple Variable Pattern Mics

Following the same directions for one microphone can be used for any number of microphones in a system. Each Variable Pattern microphone will tie up two channels on the Symetrix™ system.

