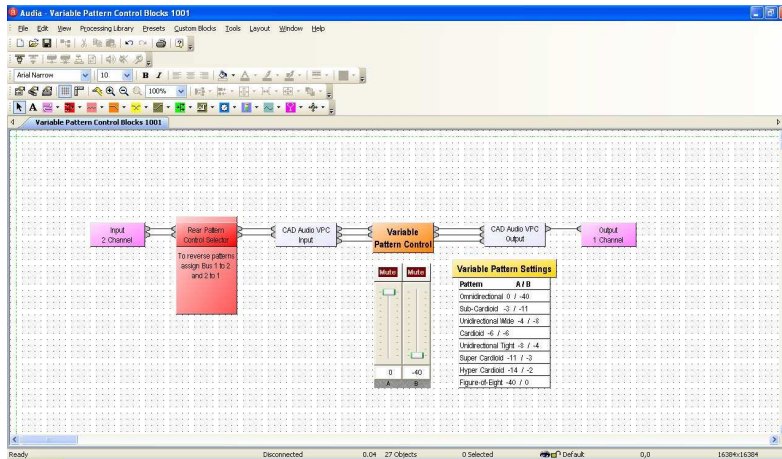
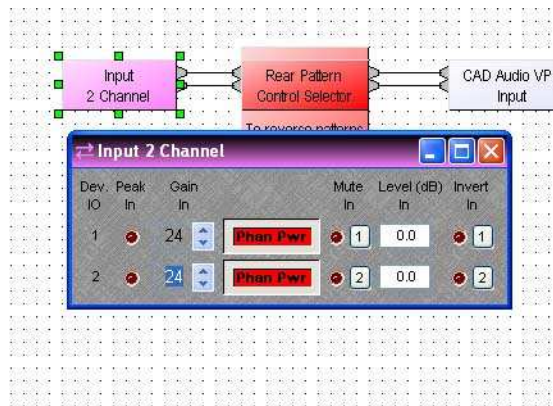


Variable Pattern Control “VPC-NET” using Biamp Audia® & Nexia®

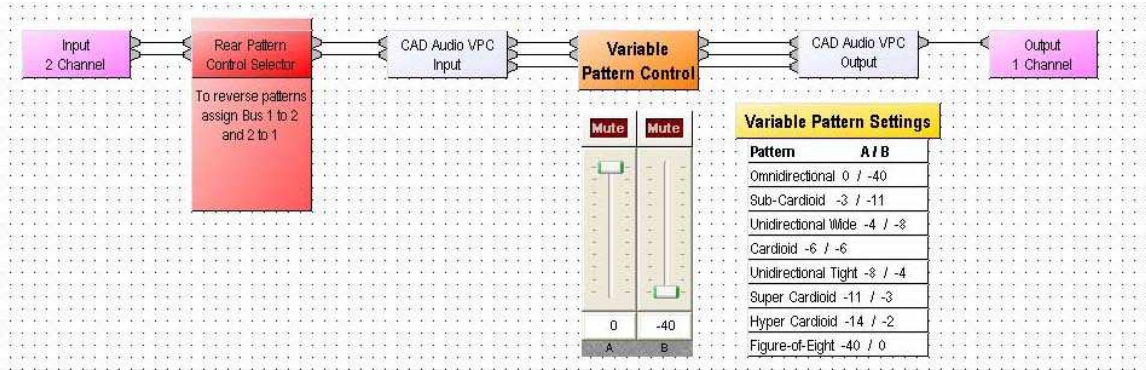
- 1.) Open “Variable Pattern Control Blocks 1001” in your Audia® or Nexia® design software
- 2.) Copy the blocks between the input and output and paste into your unit’s layout



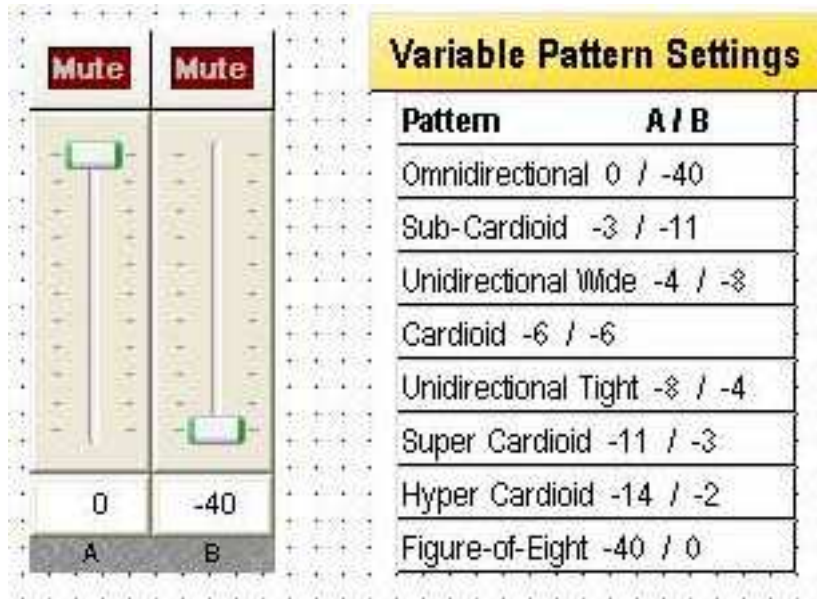
- 3.) Plug-in your variable pattern microphone to the two inputs designated for the microphone
- 4.) Set your phantom power and input gain (start with 24dB) inside the input block
(NOTE: When adjusting the gain for the microphone be sure to adjust both gains equally)



- 5.) Verify your Lines are drawn to the appropriate connectors.
- Channel 1 to input 1 on each block all the way through
 - Channel 2 to input 2 ending on CAD Audio VPC Output
 - Channel 3 coming out of CAD Audio VPC Input to Channel 3 of CAD Audio VPC Output – going behind or around the Variable pattern Control Block

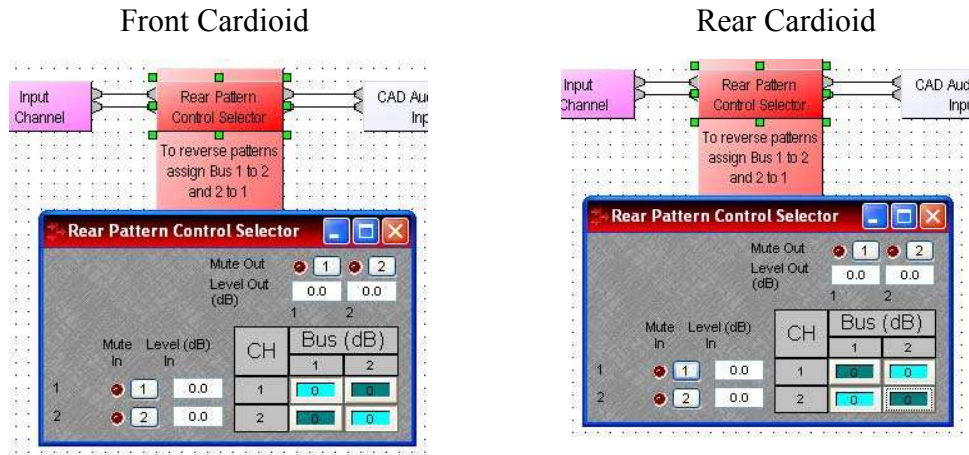


- 6.) The polar pattern can be adjusted following the guide to the right of the level controller. If the level controller does not appear, double-click on the Variable Pattern Control box. Adjust each level according to the chart for the desired patterns



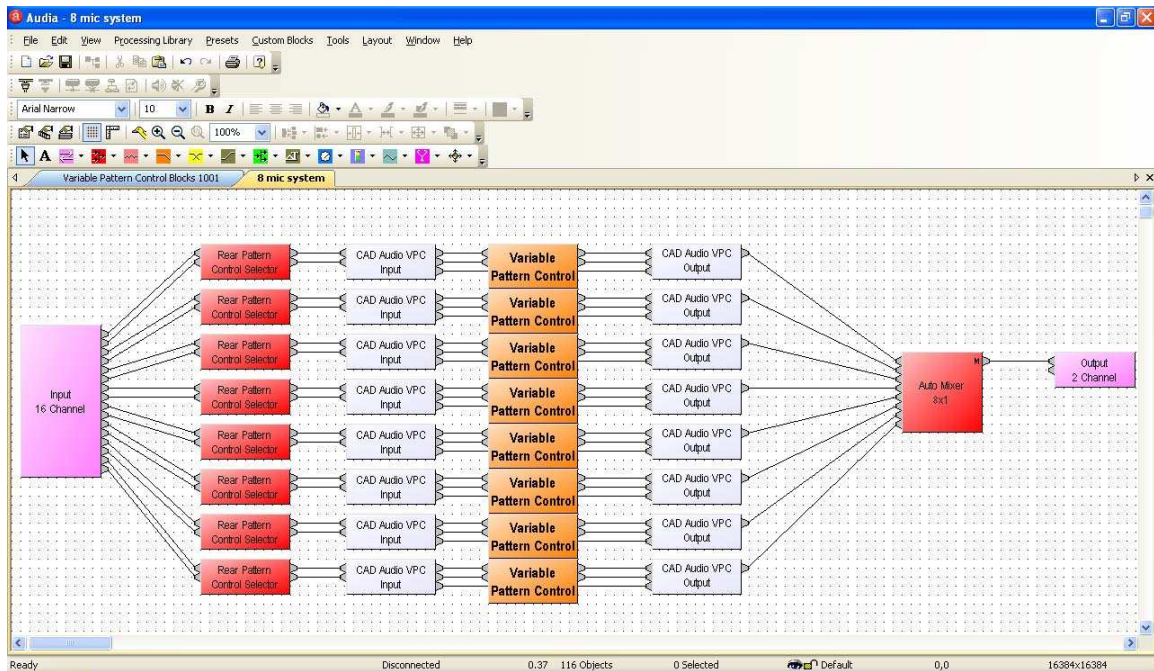
- 7.) The chart is just a guide for patterns, as the levels are changed equally, the pattern will change.

- 8.) If the polar pattern of the microphone is to be flipped (Audia® only) – i.e. Cardioid is desired out of the rear of the microphone. Double click to open the control selector and flip channel 1 to bus 2 and channel 2 to bus 1. (**NOTE:Be sure NOT to adjust the gains or mute either of the channels.**)



Using Multiple Variable Pattern Mics

Following the same directions for one microphone can be used for any number of microphones in a system. Each Variable pattern microphone will tie up two channels on the biamp system.



Using Pre-sets

The variable polar pattern can be setup to work with pre-sets within the Audia or Nexia software. Follow the directions for pre-sets and add the appropriate level control for each pre-set.

Create/Edit Preset

Preset name: ID: 1003 (LR) Set as power-up default Mute audio during recall Set as failover preset

Available DSP blocks:

Code	Label
CustomBI...	CAD Audio VPC Input
CustomBI...	CAD Audio VPC Output

Selected DSP blocks:

Code	Label
Control2	Variable Pattern Control
I/O1	Input 2 Channel
I/O3	Output 1 Channel
Mixer4	Rear Pattern Control Selector

Preset ID	Preset Name	Pwr-Up Default	Mute On Recall	Failover Preset
1001	Teleconference - Omni	No	No	No
1002	Mix-Minus - Cardioid	Yes	No	No
→ 1003	Face-to-Face - Bi-directional	No	No	No